

GENERAL PURPOSE VALVES



Series 15 >> Model 154

3-Way Normally Open Valve

The little black box – magnetic components encased in epoxy for durability and reliability. Interior parts are stainless steel and anodized aluminum. The valves may be used with air, inert gas and liquid media at pressures from vacuum to 150 psi – depending upon orifice size and configuration. For those who require extra heat resistance and media compatibility, FKM and other elastomers are available.

- Small, lightweight and economical.
- Operating pressures from vacuum to 150 psi.
- Quality design and construction.

OPERATING CONDITIONS

Media: Air, water, and other fluids compatible with standard Buna seals. Hot water, steam, gasoline, and many oils require special seal materials. (Series 15 pressure ratings may change due to the viscosity of the liquid.)*

Valve Temperature Range: Standard Valves - 0°F (-18°C) to 104°F (40°C) ambient; 0°F (-18°C) to 150°F (65°C) media. Optional Valves - can tolerate much higher or much lower ambient and media temperatures.*

Maximum Operating Pressure Differentials: See table on proceeding page.

Burst Pressure: 5,000 PSI

Leakage: Bubble tight for standard valves.

Vacuum: To 5 Microns*

ELECTRICAL CHARACTERISTICS

Coil Voltage: 4.8 to 277V AC 60 HZ. and 4.4 to 255V AC 50 HZ. – 3.0 to 180V DC

Nominal Power: AC – 7.0 Watts, DC – 10.5 Watts

Coil Construction: Molded Class F. (155 C°)

Typical Response Time on Air: 4 - 16 Milliseconds

Operating Speed: Up to 600 CPM

Duty Cycle: Continuous

MECHANICAL CHARACTERISTICS

Body: Anodized Aluminum (Std.)

Internal Components: Stainless Steel

Elastomers: Nitrile (Buna) (Std.). Many other elastomers available.*

Orifice Diameter: See table on proceeding page.

Porting: 1/8" NPT (Std.)

Housing: Leadwires, 1/2" NPT Conduit and DIN Style Connector.

Listings: Most valves are UL and CSA listed.*

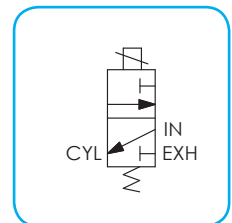
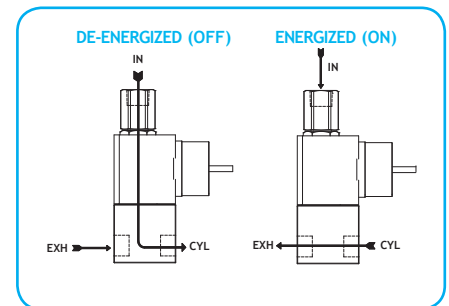
Life Expectancy: Millions of cycles, depending on application, lubrication, etc.

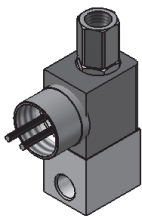
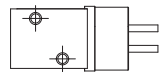
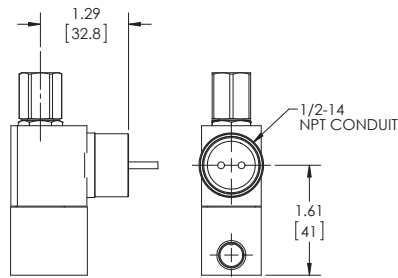
Valve Weight: 0.27 lb to 0.30 lb depending on model and housing style.

Repair Packs: See table on proceeding page.

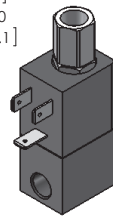
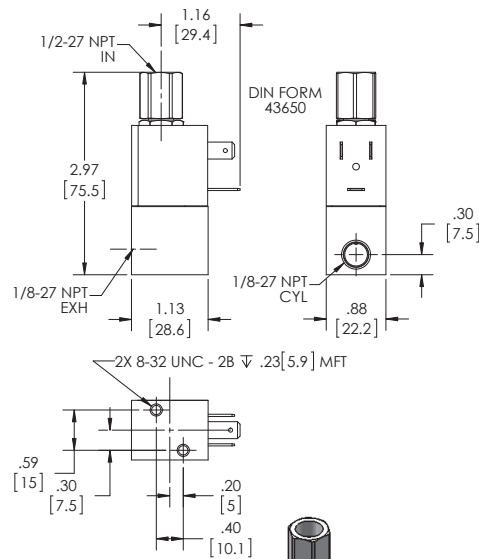
Options: Round Brass or Stainless Steel Body, Stackable Construction, Alternate Elastomers and Magnetic Latching Coil.*

* Consult representative or factory for options and specifications.

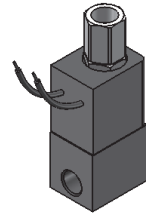
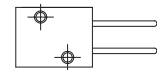
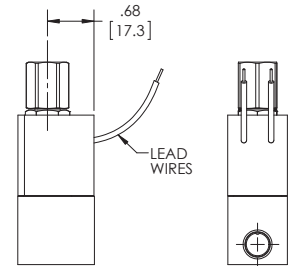




**SERIES 15
MODEL 154
3-WAY NORMALLY OPEN
CONDUIT COIL CONNECTION**



**SERIES 15
MODEL 154
3-WAY NORMALLY OPEN
DIN STYLE COIL**



**SERIES 15
MODEL 154
3-WAY NORMALLY OPEN
MOLDED COIL WITH LEADS**

VALVE SPECIFICATIONS

MAX. OPER. PRESS. DIFF.		ORIFICE SIZE		CV FACTOR		LEAD WIRE	VALVE NUMBER	
AC	DC	N.O.	N.C.	N.O.	N.C.		DIN STYLE	CONDUIT HOUSING
150	150	1/32	1/32	.020	.022	154GG2XGM	154GG2XEM	154GG2XCM
125	125	3/64	3/64	.048	.055	154HH2XGM	154HH2XEM	154HH2XCM
100	100	1/16	1/16	.075	.075	154JJ2XGM	154JJ2XEM	154JJ2XCM
75	75	1/16	3/32	.075	.130	154JK2XGM	154JK2XEM	154JK2XCM
50	50	3/32	3/32	.130	.130	154KK2XGM	154KK2XEM	154KK2XCM

WHEN ORDERING VALVES OR REPAIR PACKS ADD VOLTAGE AND FREQUENCY TO COMPLETE VALVE NUMBER. EXAMPLES: VALVE (154JJ2XGM-120/60) REPAIR PACK (K154JX-AC).