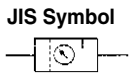


# Lube Unit Series AU

The Air Filter, Regulator and Lubricator are integrated, thus simplifying piping connections and minimizing the installation space.

Compact design

Bowl guard provided as standard equipment



**AU 2 00 [ ] 02 G 1 R**

Lube unit

Body size (Standard)

|   |     |
|---|-----|
| 1 | 1/8 |
| 2 | 1/4 |
| 3 | 3/8 |

Thread type

|     |     |
|-----|-----|
| Nil | Rc  |
| N   | NPT |
| F   | G   |

Auto-drain specifications

|    |                       |
|----|-----------------------|
| 00 | None                  |
| 11 | Float type auto-drain |

\* AU100 has no auto-drain type.

Port size

|    |     |
|----|-----|
| 01 | 1/8 |
| 02 | 1/4 |
| 03 | 3/8 |

Accessory

|   |                                     |
|---|-------------------------------------|
| B | Bracket                             |
| G | Pressure gauge with limit indicator |

Pressure gauge mounting

|    |                            |
|----|----------------------------|
| 1* | Relieving type             |
| 2  | Metal bowl                 |
| 3  | Lubricator with drain cock |

\*Only AU100 is the relieving type (as standard) with specifying nothing in particular.

## Specifications

|                               |   |
|-------------------------------|---|
| Fluid                         | Air   |
| Proof pressure                | 1.5 MPa                                       |
| Maximum operating pressure    | 1.0 MPa                                       |
| Regulating pressure range     | 0.05 to 0.7 MPa                               |
| Ambient and fluid temperature | -5 to 60°C (No freezing)                      |
| Filtration                    | 5 μm  |
| Recommended lubricant         | Turbine oil Class 1 (ISO VG32)                |
| Case*                         | With bowl guard (standard) with polycarbonate |

\* AU100 has no bowl guard.

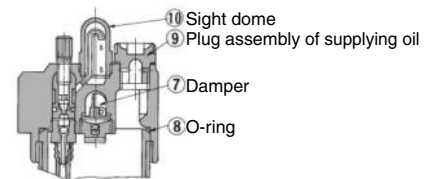
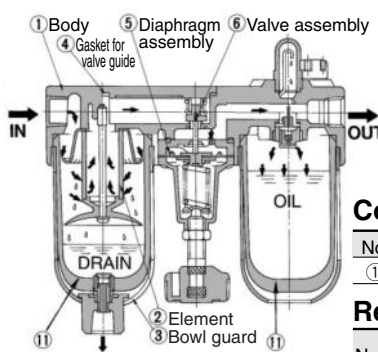
## Model

| Model      |                            | AU100                               | AU200             | AU300 |      |
|------------|----------------------------|-------------------------------------|-------------------|-------|------|
| Port size  |                            | 1/8, 1/4                            | 1/4               | 3/8   |      |
| Weight (g) |                            | 950                                 | 1,450             | 1,600 |      |
| Accessory  | Standard                   | Bowl guard                          | ●                 | ●     |      |
|            | Option                     | Bracket                             | B31P              | B32P  | B32P |
|            |                            | Float type auto-drain               | —                 | AD32  | AD32 |
|            |                            | Pressure gauge with limit indicator | G46-10-□01 (Note) |       |      |
| Option     | Relieving type             | ●*                                  | ●                 | ●     |      |
|            | Metal bowl                 | ●                                   | ●                 | ●     |      |
|            | Lubricator with drain cock | ●                                   | ●                 | ●     |      |

Note) □ in the gauge part no. (e.g. G46-10-□01) indicates the type of threads used for connection. For Rc, leave the symbol blank, and for NPT, enter "N". Please contact SMC concerning the supply of NPT pressure gauges.

\* Relieving type is provided as standard for AU100.

## Construction



## Component Parts

\* AU100 type

| No. | Description | Material                              |
|-----|-------------|---------------------------------------|
| ①   | Body        | Zinc die-casted, Aluminum die-casted* |

## Replacement Parts

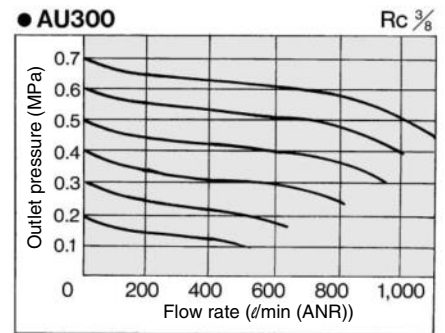
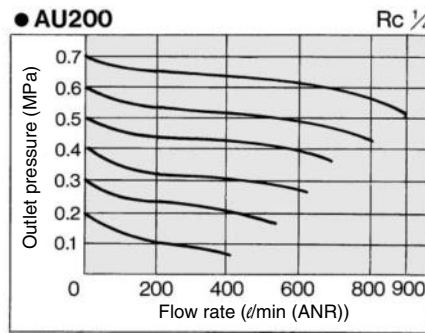
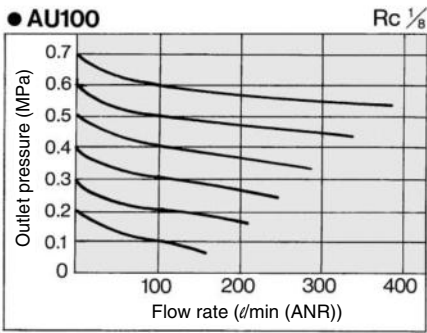
| No. | Description                    | Material              | Model    |           |           |
|-----|--------------------------------|-----------------------|----------|-----------|-----------|
|     |                                |                       | AU100    | AU200     | AU300     |
| ②   | Element                        | Bronze                | 11294-5B | 113010-5B | 113010-5B |
| ③   | Bowl guard                     | Filter                | —        | C22F      | C23F      |
|     |                                | Lubricator            | —        | C22L      | C23L      |
| ④   | Gasket for valve guide         | NBR                   | 16505    | 16515     | 16515     |
| ⑤   | Diaphragm assembly             | Weather resistant NBR | 13497A   | 16517AN   | 16517AN   |
| ⑥   | Valve assembly                 | —                     | 1349173  | 13504A    | 13504A    |
| ⑦   | Damper                         | —                     | 12293-1  | 165150    | 165150    |
| ⑧   | O-ring                         | NBR                   | 11297    | 11307     | 11307     |
| ⑨   | Plug assembly of supplying oil | —                     | 122962A  | 12314PA   | 12314PA   |
| ⑩   | Sight dome                     | Polycarbonate         | 12316    | 12316     | 12316     |
| ⑪   | Bowl                           | Filter                | C200F    | 113095A   | 113096A   |
|     |                                | Lubricator            | C200L    | 123030    | 123031    |
| ⑬   | Bowl assembly                  | Filter                | —        | AF11-2    | AF11-3    |
|     |                                | Lubricator            | —        | AL12-2    | AL12-3    |

- F.R.L.
- AV
- AU
- AF
- AR
- IR
- VEX
- AMR
- ITV
- IC
- VBA
- VE□
- VY1
- G
- PPA
- AL

# Series AU

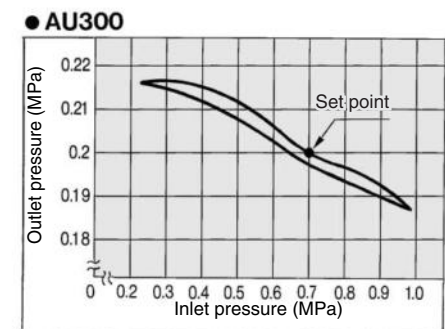
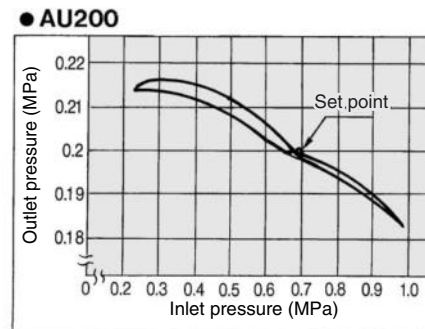
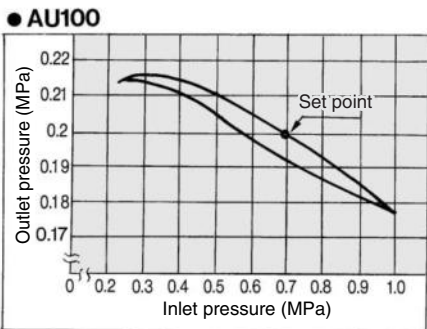
## Flow Characteristics

Inlet pressure: 1.0 MPa



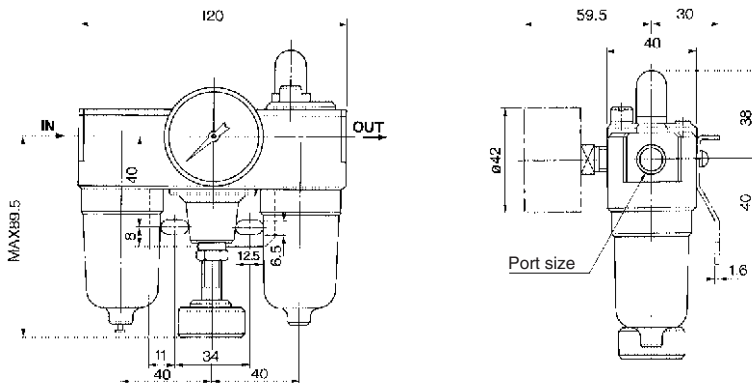
## Pressure Characteristics

Inlet pressure: 0.7 MPa, Outlet pressure: 0.2 MPa, Flow rate: 20 l/min (ANR)

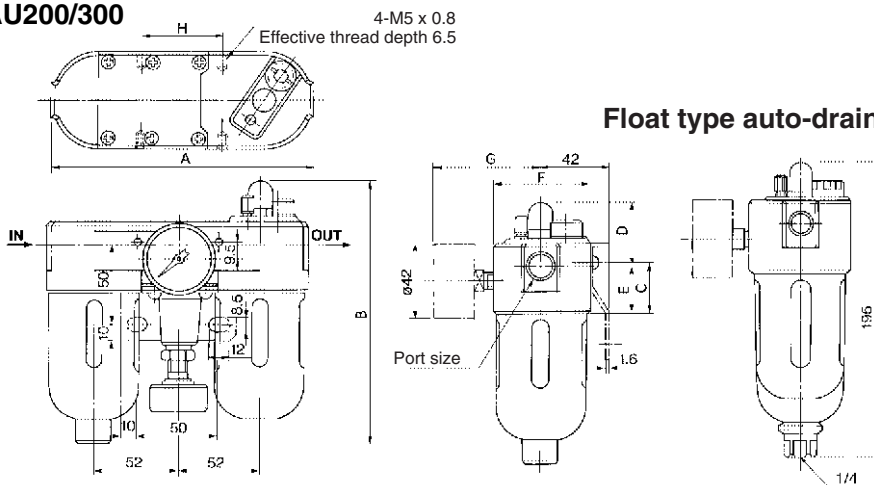


## Dimensions

### AU100



### AU200/300



## ⚠ Precautions

Be sure to read before handling. Refer to pages 14-21-3 and 14-21-4 for Safety Instructions and Common Precautions.

## Piping

### ⚠ Warning

- When making drain exhaust piping, use piping with bore size  $\phi 8$  or larger than  $\phi 8$ . Length should be shorter than 5 m. Do NOT pipe upwards.

| Model | A   | B     | C    | D    | E  | F  | G  | H  | Port size |
|-------|-----|-------|------|------|----|----|----|----|-----------|
| AU200 | 165 | 164   | 31.5 | 40.5 | 30 | 61 | 70 | 50 | 1/4       |
| AU300 | 165 | 188.5 | 31.5 | 40.5 | 30 | 61 | 70 | 50 | 3/8       |