



Air Cylinder

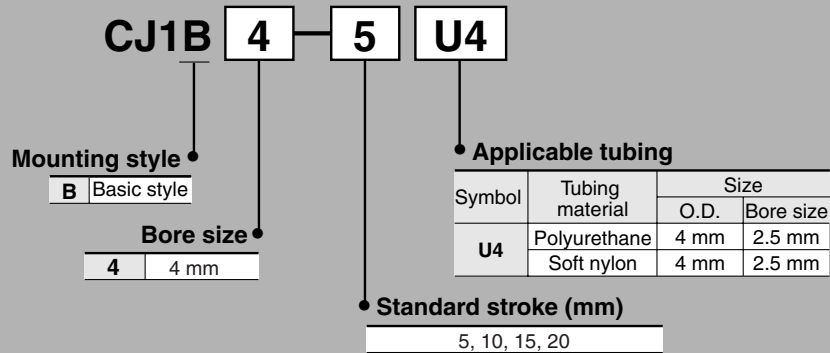
Series CJ1

Double Acting: $\phi 4$ /Single Acting, Spring Return: $\phi 2.5$, $\phi 4$

Series Variations

Series	Action	Bore size (mm)	Cylinder standard stroke (mm)	Page
Standard Series CJ1 	Double acting	Single rod 4	5, 10, 15, 20	6-2-2
	Single acting	Single rod Spring return 2.5 4	5, 10 5, 10, 15, 20	6-2-4

How to Order/Double Acting



For single acting type, refer to pages 6-2-4 to 5.

CJ1

CJP

CJ2

CM2

CG1

MB

MB1

CA2

CS1

C76

C85

C95

CP95

NCM

NCA

D-

-X

20-

Data

Air Cylinder

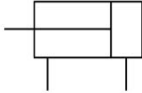
Double Acting, Single Rod

Series CJ1

ø4



JIS Symbol
Double acting,
Single rod



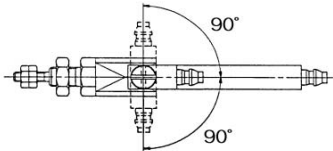
Formation of small series of a double acting cylinder

(A cylinder with ø4 bore has been added as a compact type to the existing CJ2: ø6 double acting cylinder.)

The fitting on the rod cover side has been provided with a variable piping direction.

(The piping direction of the fitting on the rod cover side can move freely within a range of ±90°.)

■ **The piping direction of the fitting on the rod cover side varies within a range of ±90°.**



⚠ Precautions

Be sure to read before handling. Refer to pages 6-20-3 to 6-20-6 for Safety Instructions and Actuator Precautions.

Piping

⚠ Caution

- Do not force to connect piping in such a way that the lateral force could be applied on a cylinder tube. Because this could cause a cylinder tube to slant and malfunction.

Mounting

⚠ Caution

- Do not install by directly grasping the cylinder tube, as this could cause a tube to deform and malfunction.
- Do not install it by directly grasping the piston rod with a pair of electrician's pliers. Because scratches on the piston rod would cause a bearing or rod seal to get damaged, malfunction, and leak air.

Specifications

Action	Double acting, Single rod
Fluid	Air
Proof pressure	1.05 MPa
Maximum operating pressure	0.7 MPa
Minimum operating pressure	0.2 MPa
Ambient and fluid temperature	-10 to 70°C (No freezing)
Piston speed	50 to 500 mm/s
Cushion	None
Thread tolerance	JIS Class 2
Stroke length tolerance	+0.5 mm
Mounting	Basic style
Lubrication	Not required (Non-lube)

Model/Bore Size/Standard Stroke

Model	Bore size (mm)	Standard stroke (mm)
CJ1B4	4	5, 10, 15, 20

Applicable Tubing

Tubing type	Material	Size		Tube no.
		O.D.	Bore size	
Metric size	Polyurethane	4 mm	2.5 mm	TU0425
	Soft nylon	4 mm	2.5 mm	TS0425

Theoretical Output

(N)

Bore size (mm)	Rod size (mm)	Action	Piston area (mm ²)	Operating pressure (MPa)					
				0.2	0.3	0.4	0.5	0.6	0.7
4	2	OUT	12.6	2.52	3.78	5.04	6.30	7.56	8.82
		IN	9.4	1.88	2.82	3.76	4.70	5.64	6.58

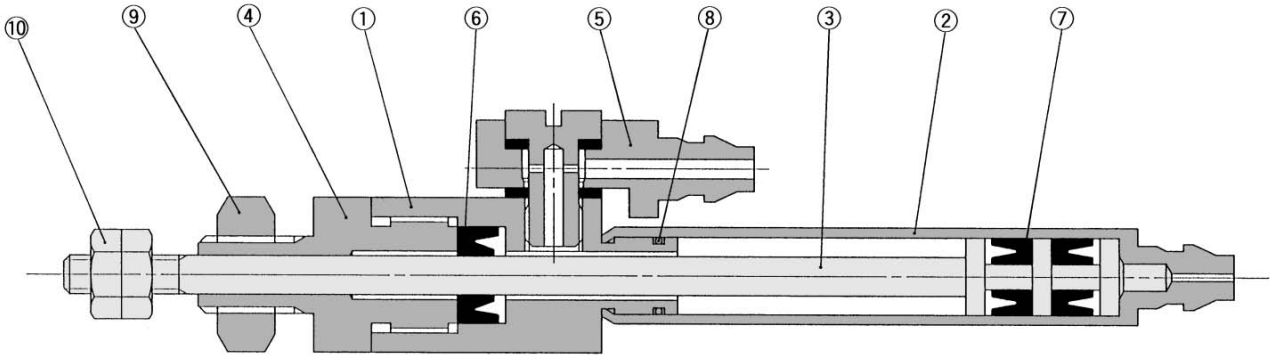
Weight

(g)

Bore size (mm)	Cylinder stroke (mm)	Weight
4	5	12.0
	10	12.4
	15	12.8
	20	13.2

Air Cylinder Double Acting, Single Rod **Series CJ1**

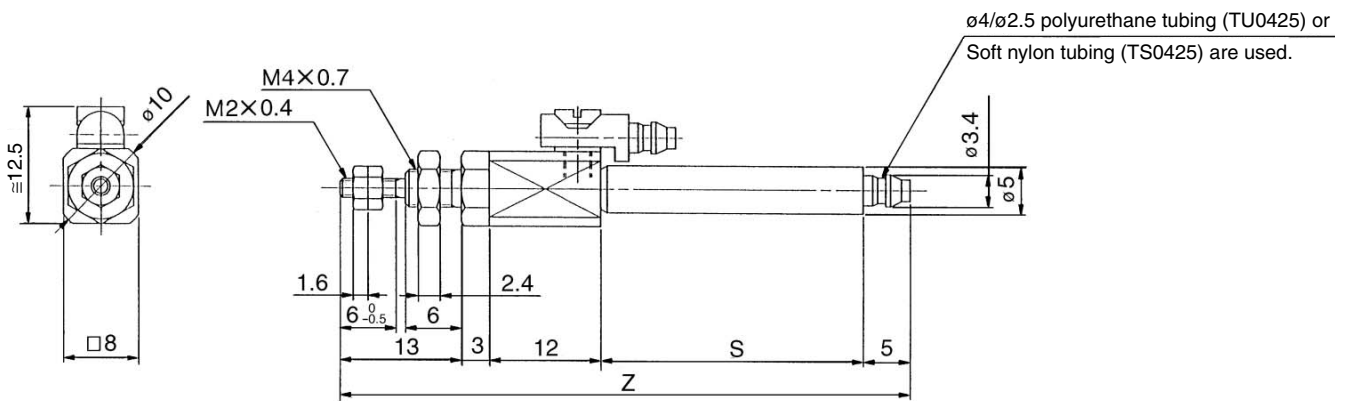
Construction



Component Parts

No.	Description	Material	Note
①	Rod cover	Brass	Electroless nickel plated
②	Cylinder tube	Brass	Electroless nickel plated
③	Piston	Stainless steel	
④	Seal retainer	Brass	Electroless nickel plated
⑤	Fittings	Body Brass Gasket PVC	Electroless nickel plated
⑥	Rod seal	NBR	
⑦	Piston seal	NBR	
⑧	Tube gasket	NBR	
⑨	Mounting nut	Steel	Nickel plated
⑩	Rod end nut	Steel	Nickel plated

Dimensions: Double Acting, Basic Style



Symbol	S				Z			
Bore size (mm) / Stroke	5	10	15	20	5	10	15	20
4	18	23	28	33	51	56	61	66

CJ1

CJP

CJ2

CM2

CG1

MB

MB1

CA2

CS1

C76

C85

C95

CP95

NCM

NCA

D-

-X

20-

Data

Air Cylinder

Single Acting, Single Rod, Spring Return

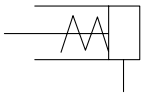
Series CJ1

ø2.5, ø4



JIS Symbol

Single acting, Spring return



How to Order/Single Acting

CJ1B **4** **10** **S** **U4**

Mounting style

B Basic style

Bore size

2	2.5 mm
4	4 mm

Standard stroke (mm)

ø2.5	5, 10
ø4	5, 10, 15, 20

Applicable tubing

Symbol	Tubing material	Size	
		O.D.	Bore size
U4	Polyurethane	4 mm	2.5 mm
	Soft nylon	4 mm	2.5 mm

Single acting, Spring return

Specifications

Action	Single acting, Spring return
Fluid	Air
Proof pressure	1.05 MPa
Maximum operating pressure	0.7 MPa
Minimum operating pressure	0.3 MPa
Ambient and fluid temperature	-10 to 70°C (No freezing)
Piston speed	50 to 500 mm/s
Cushion	None
Thread tolerance	JIS Class 2
Stroke length tolerance	$^{+0.5}_0$ mm
Mounting	Basic style
Lubrication	Not required (Non-lube)

⚠ Precautions

Be sure to read before handling. Refer to pages 6-20-3 to 6-20-6 for Safety Instructions and Actuator Precautions.

Piping

⚠ Caution

- Do not force to connect piping in such a way that the lateral force could be applied on a cylinder tube. Because this could cause a cylinder tube to slant and malfunction. Because this could cause a cylinder tube to tilt and malfunction.

Mounting

⚠ Caution

- Do not use it in such a way that a load could be applied to the piston rod during the retraction. The spring that is built into the cylinder provides only enough force to retract the piston rod. Thus, if a load is applied, the piston rod will not be able to retract to the end of the stroke.
- Do not install it by directly grasping the cylinder tube, as this could cause a tube to deform and malfunction.

Model/Bore Size/Standard Stroke

Model	Bore size (mm)	Standard stroke (mm)
CJ1B2	2.5	5, 10
CJ1B4	4	5, 10, 15, 20

Applicable Tubing

Tubing type	Material	Size		Model no.
		O.D.	Bore size	
Metric size	Polyurethane	4 mm	2.5 mm	TU0425
	Soft nylon	4 mm	2.5 mm	TS0425

Theoretical Output

Bore size (mm)	Rod size (mm)	Operating direction	Piston area (mm ²)	Operating pressure (MPa)				
				0.3	0.4	0.5	0.6	0.7
2.5	1	OUT	4.9	0.34	0.83	1.32	1.81	2.30
		IN	—	0.64				
4	2	OUT	12.6	0.74	2.00	3.26	4.52	5.78
		IN	—	1.47				

Spring Force

Bore size (mm)	Retracted side	Extended side
2.5	1.13	0.64
4	3.04	1.47

Weight

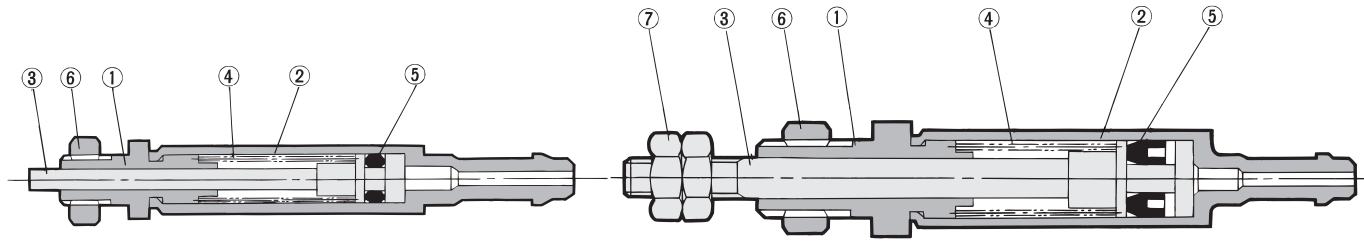
Bore size (mm)	5	10	15	20
2.5	1.5	2	—	—
4	3.7	4.6	5.6	6.5

Air Cylinder Single Acting, Single Rod, Spring Return **Series CJ1**

Construction (Not able to disassemble.)

CJ1B2-□SU4

CJ1B4-□SU4

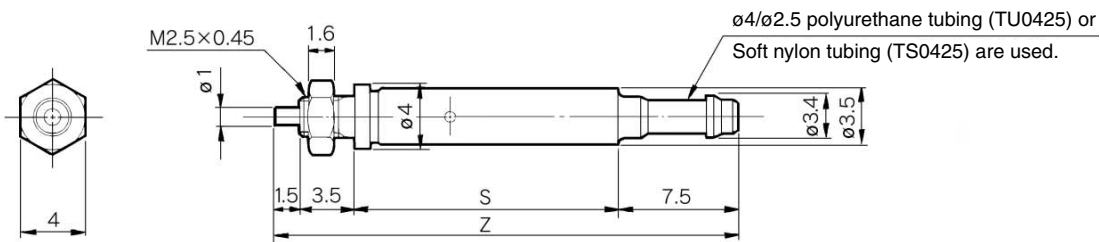


Component Parts

No.	Description	Material	Note
①	Rod cover	Brass	Electroless nickel plated
②	Cylinder tube	Brass	Electroless nickel plated
③	Piston rod	Stainless steel	
④	Spring	Stainless steel wire	
⑤	Piston seal	NBR	
⑥	Mounting nut	Brass	Black zinc chromated
⑦	Rod end nut	Steel	Electroless nickel plated

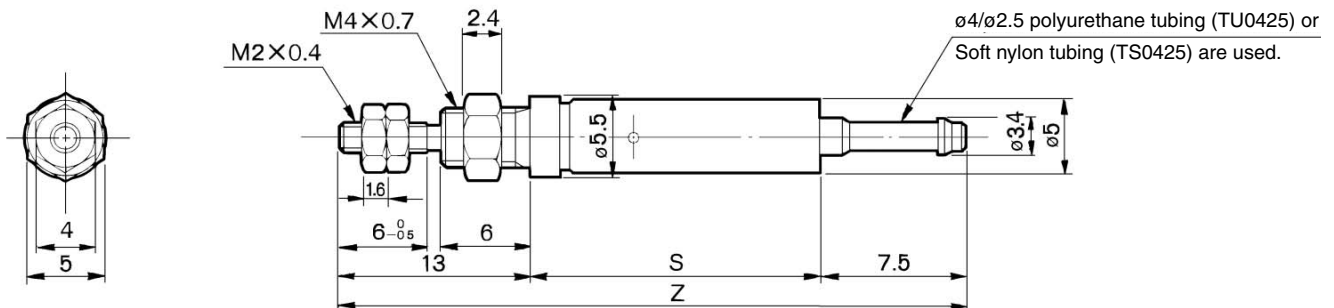
Basic Style

Bore size: $\phi 2.5$ /CJ1B2-□SU4



Bore size (mm)	Symbol Stroke	S		Z	
		5	10	5	10
2.5		16.5	25.5	29	38

Bore size: $\phi 4$ /CJ1B4-□SU4



Bore size (mm)	Symbol Stroke	S				Z			
		5	10	15	20	5	10	15	20
4		19.5	28.5	37.5	46.5	40	49	58	67

CJ1

CJP

CJ2

CM2

CG1

MB

MB1

CA2

CS1

C76

C85

C95

CP95

NCM

NCA

D-

-X

20-

Data