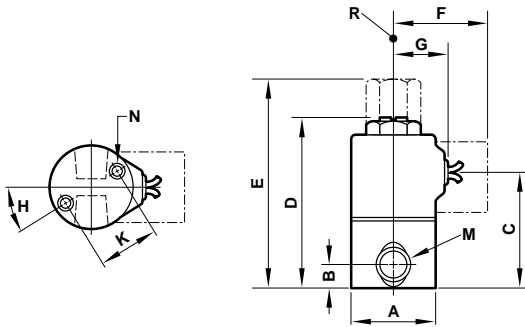




Dimensions

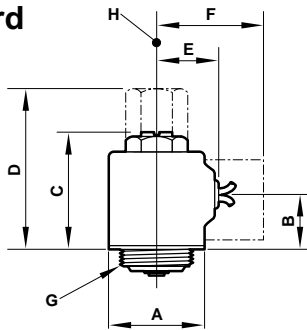
All Dimensions in Inches (mm)

Standard Valve



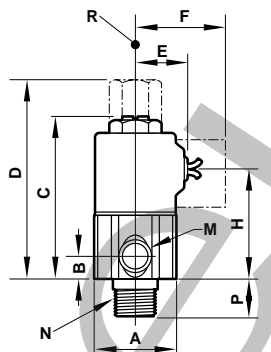
	A	B	C	D	E	F	G	H	K	M	N	R
Series 1	.99 (25)	.28 (7)	1.33 (33)	2.12 (54)	2.47 (63)	1.12 (29)	.64 (16)	32-1/2°	.73 (19)	1/8-27 NPTF	#8-32 UNC x 1/4 MFT	1/8-27 NPTF
Series 2	.99 (25)	.28 (7)	1.51 (38)	2.32 (59)	2.66 (68)	1.12 (29)	.64 (16)	32-1/2°	.73 (19)	1/8-27 NPTF	#8-32 UNC x 1/4 MFT	1/8-27 NPTF
Series 3	1.18 (30)	.355 (9)	1.65 (42)	2.46 (62)	2.80 (71)	1.19 (30)	.78 (20)	41°	.91 (23)	1/8-27 NPTF	#10-32 UNF x 1/4 MFT	1/8-27 NPTF or
								0°		1/4-18 NPTF	#8-32 UNC x 1/4 MFT	1/4-18 NPTF
Series 6	1.62 (41)	.344 (9)	G-2.04 (52)	2.86 (73)	3.54 (90)	1.58 (40)	1.03 (26)	45°	1.24 (31)	1/8-27 NPTF	#10-32 UNF x 5/16 MFT	1/8-27 NPTF or
			C-1.87 (48)							1/4-18 NPTF		1/4-18 NPTF

Operator Standard



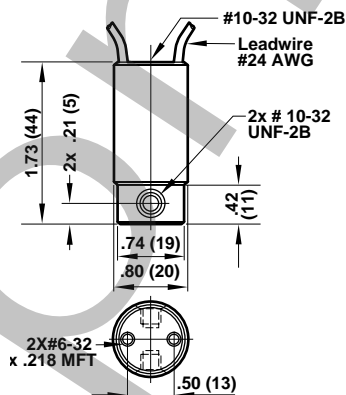
	A	B	C	D	E	F	G	H
Series 1	1.02 (26)	.52 (13)	1.32 (34)	1.67 (42)	.64 (16)	1.12 (29)	3/4-32 UNEF	1/8-27 NPTF
Series 2	1.02 (26)	.71 (18)	1.52 (39)	1.86 (47)	.64 (16)	1.12 (29)	3/4-32 UNEF	1/8-27 NPTF
Series 3	1.16 (30)	.71 (18)	1.52 (39)	1.86 (47)	.78 (20)	1.19 (30)	3/4-32 UNEF	1/8-27 NPTF or 1/4-18 NPTF
Series 6	1.64 (42)	G-.97 (25)	1.79 (46)	2.48 (63)	1.03 (26)	1.58 (40)	1-32 UN	1/8-27 NPTF or 1/4-18 NPTF
		C-.80 (20)						

Hex Male Valve Standard



	A	B	C	D	E	F	H	M	N	P	R
Series 1	.94 (24) Hex	.27 (7)	2.12 (54)	2.47 (63)	.64 (16)	1.12 (29)	1.32 (33)	1/8-27 NPTF	1/8-27 NPTF	.44 (11)	1/8-27 NPTF
			1/4-18 NPTF	.56 (14)							
Series 2	.94 (24) Hex	.27 (7)	2.32 (59)	2.66 (68)	.64 (16)	1.12 (29)	1.51 (38)	1/8-27 NPTF	1/8-27 NPTF	.44 (11)	1/8-27 NPTF
			1/4-18 NPTF	.56 (14)							

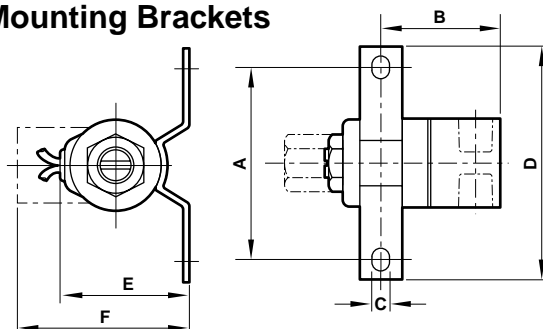
KIP Jr. Standard



Bracket Dimensions

	A	B	C	D	E	F
Series 1	2.13 (54)	1.33 (34)	.20 (5)	2.63 (67)	1.45 (37)	1.93 (49)
Series 6	2.13 (54)	1.97 (50)	.20 (5)	2.63 (67)	2.15 (55)	2.68 (68)

Mounting Brackets



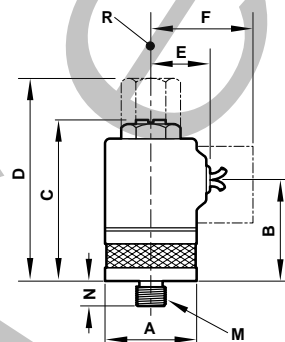


Dimensions

All Dimensions in Inches (mm)

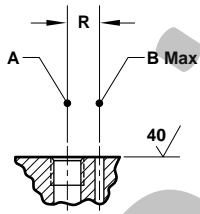
	A	B	C	D	E	F	M	N	R
Series 1	.99 (25)	1.07 (27)	1.87 (48)	2.22 (56)	.64 (16)	1.12 (29)	5/16 24 UNF	.25 (6)	1/8-27 NPTF
Series 2	.99 (25)	1.26 (32)	2.07 (53)	2.41 (61)	.64 (16)	1.12 (29)	5/16 24 UNF	.25 (6)	1/8-27 NPTF
Series 6	1.62 (41)	G- 1.73 (44) C- 1.56 (40)	2.55 (65)	3.23 (82)	1.03 (26)	1.58 (40)	1/2 20 UNF	.31 (8)	1/8-27 NPTF or 1/4-18 NPTF

Manifold Mount Valve



Manifold Mount Interface

	A	B	R
Series 1 & 2	5/16 - 20 UNF-2B x .26 MFT	.09 (2)	.31 (8)
Series 6	1/2 - 20 UNF-2B x .32 MFT	.27 (7)	.51 (13)

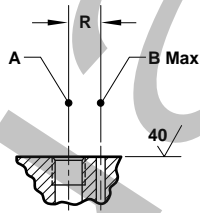


NOTE: A is underseat connection**

B is overseat connection***

KIP Jr. Manifold Mount Interface

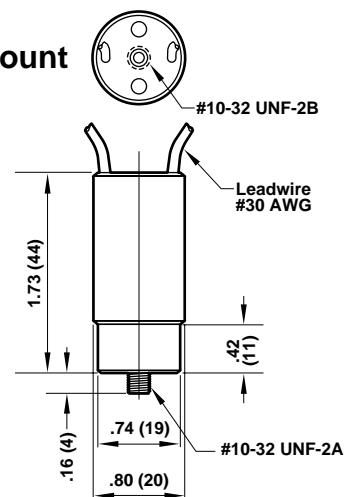
	A	B	R
Low Watt	10-32 UNF-2B x .150 MFT	.08 (2.08)	.22 (5.45)



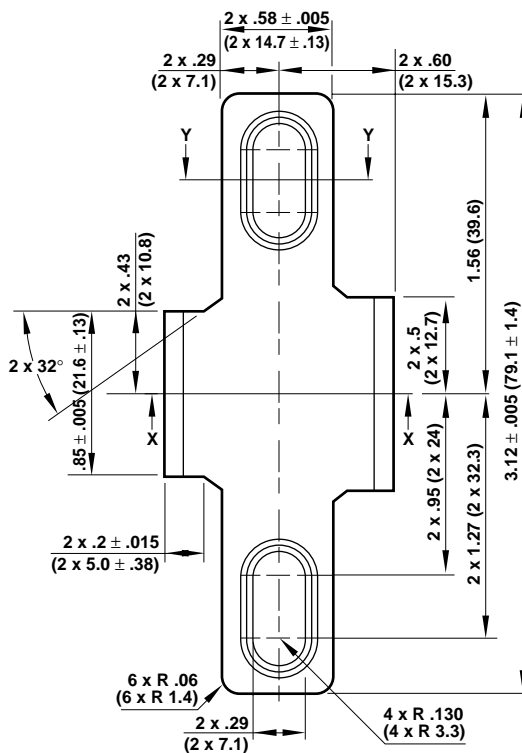
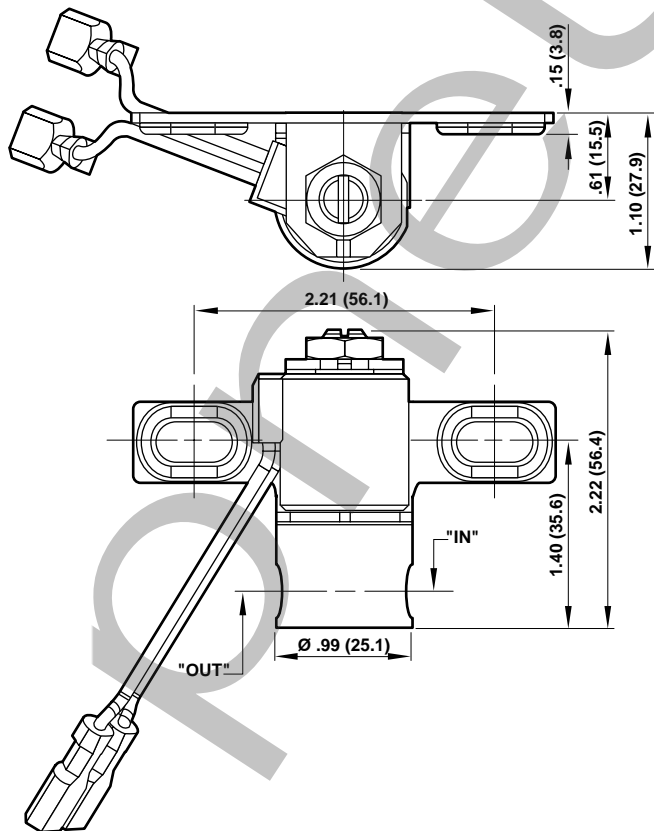
NOTE: A is underseat connection**

B is overseat connection***

KIP Jr. Manifold Mount



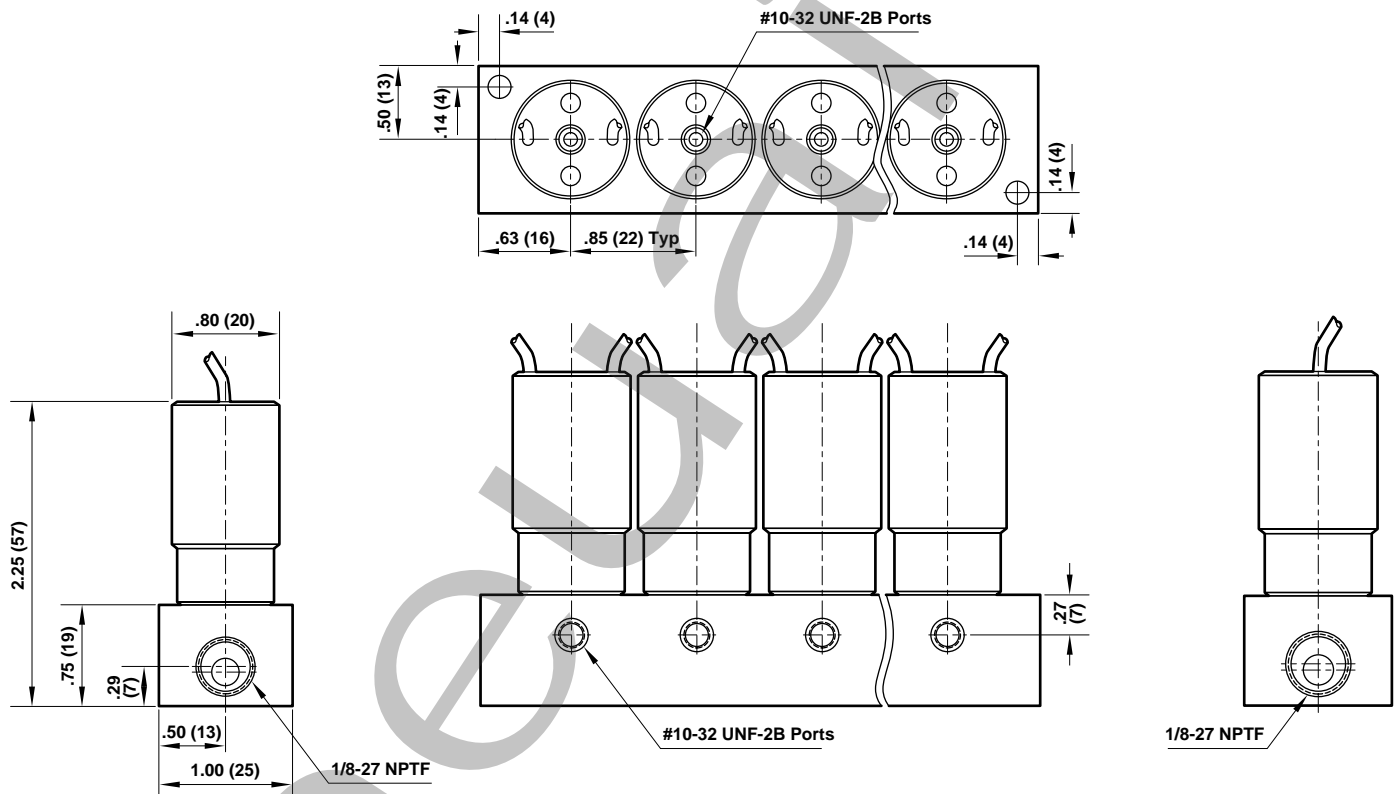
Plastic Body Standard





KIP Jr. Series Manifold Dimensions

Manifold Mount Valve Type Manifold





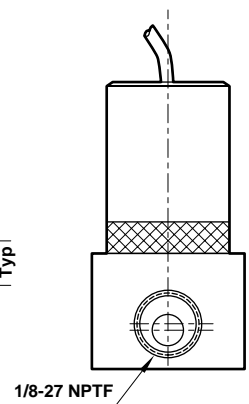
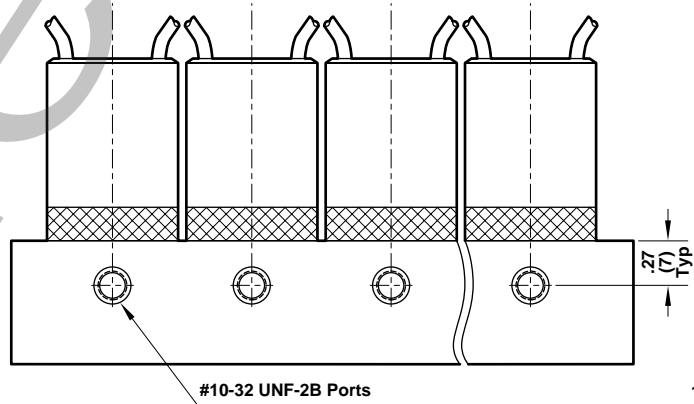
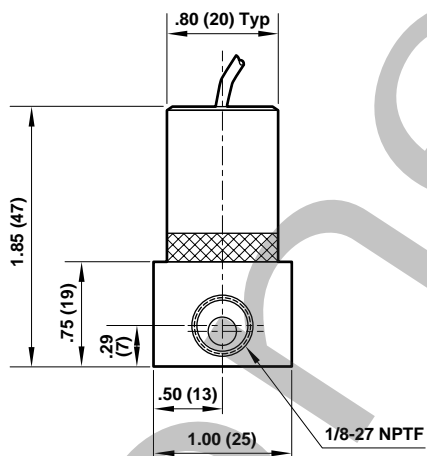
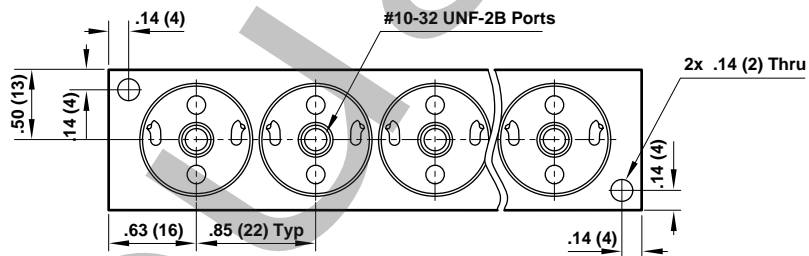
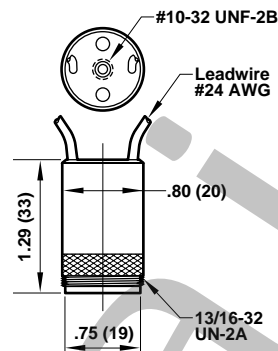
Dimensions

All Dimensions in Inches (mm)

KIP Jr. Series Manifold Dimensions

Operator Mounting Type Manifolds - Including Isolation Type Manifolds

KIP Jr. Operator



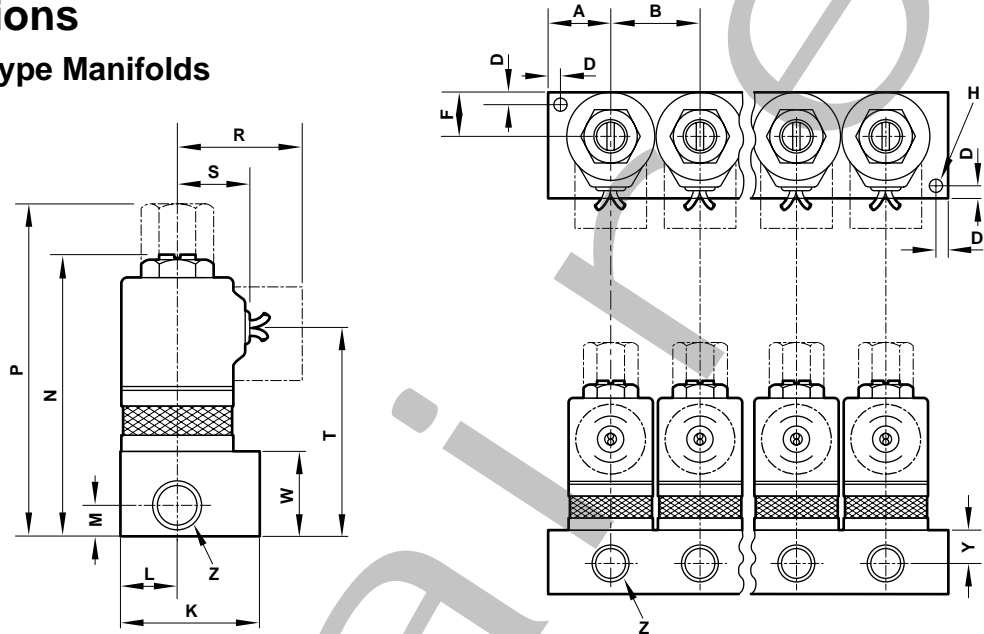


Dimensions

All Dimensions in Inches (mm)

Manifold Dimensions

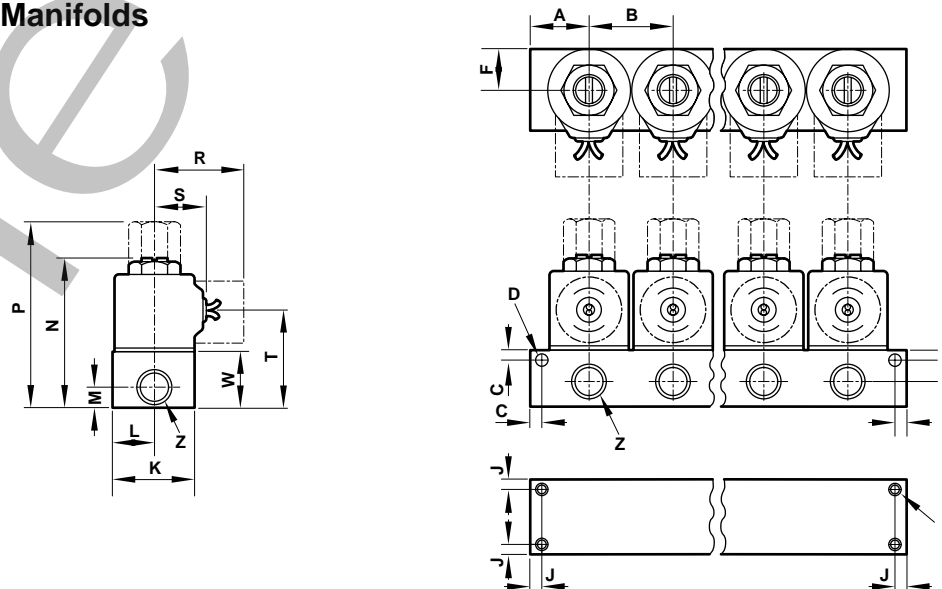
Manifold Mount Valve Type Manifolds



	A	B	D	F	H	K	L	M	N	P	R	S	T	W	Y	Z
Series 1	.75 (19)	1.06 (27)	.14 (4)	.52 (13)	.15 (4)	1.25 (32)	.52 (13)	.28 (7)	2.62 (67)	2.97 (75)	1.12 (29)	.64 (16)	1.82 (46)	.75 (19)	.41 (10)	1/8-27 NPTF
								.34 (9)								1/4-18 NPTF
Series 2	.75 (19)	1.06 (27)	.14 (4)	.52 (13)	.15 (4)	1.25 (32)	.52 (13)	.28 (7)	2.82 (72)	3.16 (80)	1.12 (29)	.64 (16)	2.01 (51)	.75 (19)	.41 (10)	1/8-27 NPTF
								.34 (9)								1/4-18 NPTF
Series 6	.94 (24)	1.69 (43)	.19 (5)	.84 (21)	.20 (5)	1.75 (45)	.84 (21)	.38 (10)	3.55 (90)	4.23 (108)	1.58 (40)	1.03 (26)	2.73* (69)	1.00 (25)	.56 (14)	1/8-27 NPTF
								.44 (11)					2.56** (65)			1/4-18 NPTF

* = Grommet ** = Conduit

Operating Mounting Type Manifolds



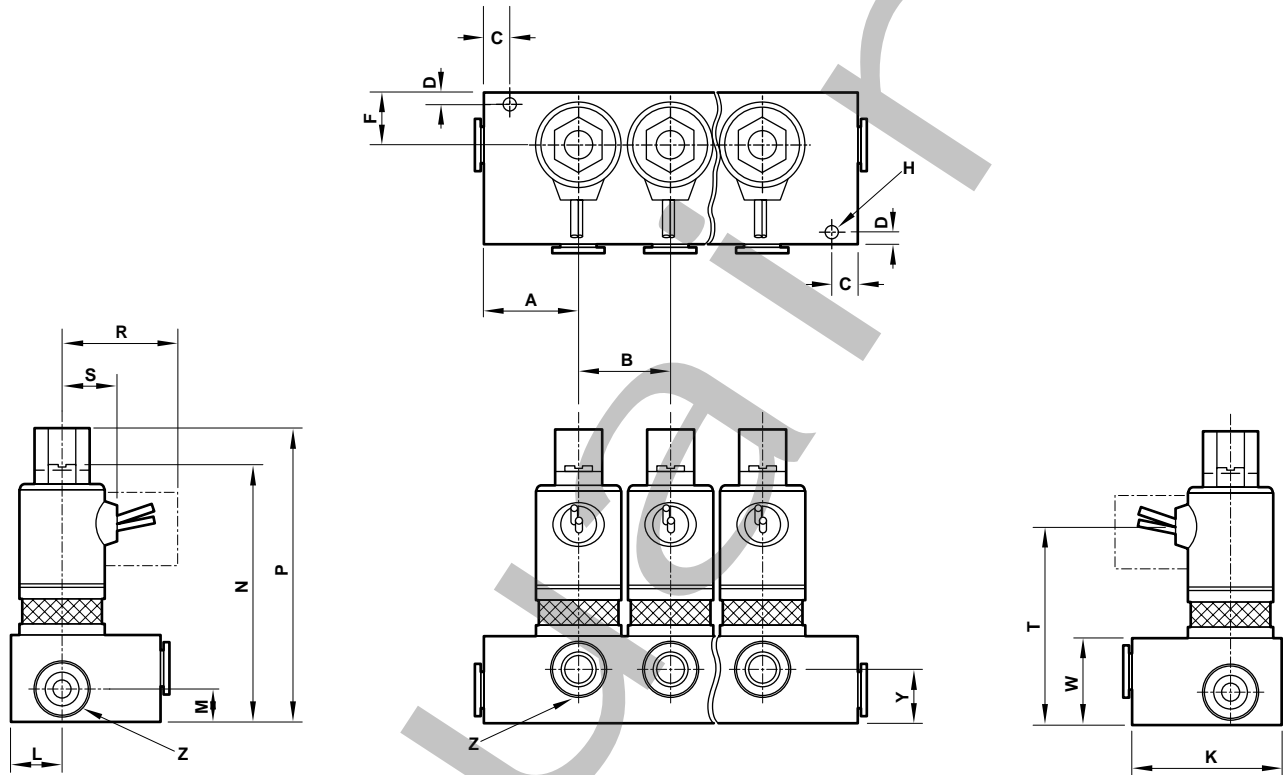
	A	B	C	D	F	J	K	L	M	N	P	R	S	T	U	W	Y	Z
Series 1	.78 (20)	1.06 (27)	.16 (4)	.19 (5)	.52 (13)	.16 (4)	1.00 (25)	.50 (13)	.42 (10)	2.33 (59)	2.67 (68)	1.12 (29)	.64 (16)	1.52 (39)	#8-32 UNC x 1/4 MFT	1.00 (25)	.58 (15)	1/8-27 NPTF
Series 2	.78 (20)	1.06 (27)	.16 (4)	.19 (5)	.52 (13)	.16 (4)	1.00 (25)	.50 (13)	.42 (10)	2.52 (64)	2.87 (73)	1.12 (29)	.64 (16)	1.72 (44)	#8-32 UNC x 1/4 MFT	1.00 (25)	.58 (15)	1/8-27 NPTF



Dimensions

All Dimensions in Inches (mm)

Manifold Dimensions Including Cartridge Inserts



	A	B	C	D	F	H	K	L	M	N	P	R	S	T	W	Y	Z
Series 1	.92 (23)	1.06 (27)	.30 (8)	.14 (4)	.52 (13)	.15 (4)	1.50 (38)	.52 (13)	.33 (8)	2.87 (73)	3.53 (90)	1.12 (28)	.64 (16)	2.07 (53)	1.00 (25)	.60 (15)	1/4
	1.10 (28)	1.06 (27)	.30 (8)	.14 (4)	.60 (15)	.15 (4)	1.75 (45)	.60 (15)	.38 (10)	2.87 (73)	3.69 (94)	1.12 (28)	.64 (16)	2.07 (53)	1.00 (25)	.62 (16)	3/8
Series 2	.92 (23)	1.06 (27)	.30 (8)	.14 (4)	.52 (13)	.15 (4)	1.50 (38)	.52 (13)	.33 (8)	3.07 (78)	3.71 (94)	1.12 (28)	.64 (16)	2.26 (57)	1.00 (25)	.60 (15)	1/4
	1.10 (28)	1.06 (27)	.30 (8)	.14 (4)	.60 (15)	.15 (4)	1.75 (45)	.60 (15)	.38 (10)	3.07 (78)	3.88 (99)	1.12 (28)	.64 (16)	2.26 (57)	1.00 (25)	.62 (16)	3/8
Series 6	1.17 (30)	1.69 (43)	.19 (5)	.19 (5)	.84 (21)	.20 (5)	2.00 (51)	.84 (21)	1.17 (30)	3.55 (90)	4.23 (107)	1.58 (40)	1.03 (26)	2.73* (69)	1.00 (25)	.55 (14)	1/4
														2.56** (65)			
	1.41 (36)	1.69 (43)	.19 (5)	.19 (5)	.84 (21)	.20 (5)	2.25 (57)	.84 (21)	1.41 (36)	3.80 (97)	4.65 (118)	1.58 (40)	1.03 (26)	2.98* (76)	1.25 (32)	.78 (20)	3/8
														2.81** (71)			
	1.41 (36)	1.69 (43)	.19 (5)	.19 (5)	.84 (21)	.20 (5)	2.25 (57)	.84 (21)	1.41 (36)	3.80 (97)	4.65 (118)	1.58 (40)	1.03 (26)	2.98* (76)	1.25 (32)	.78 (20)	1/2
														2.81** (71)			

* = Grommet ** = Conduit